

GraphMaster Pro

**MODEL
03-03**



All the data direct on your PC

GraphMaster Pro is a PC software that connects your test instrument to the computer. After a test, the data is immediately visible on your PC. Here the data can be analyzed, stored and translated in a report. The GraphMaster software is compatible with all the Messmer Büchel and Testing Machines Inc instruments.

Test results visible in graph or table

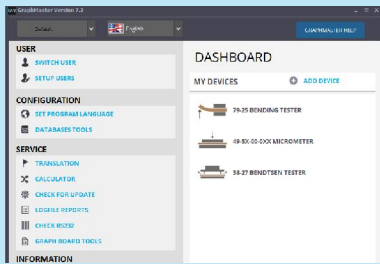
The measured results can be shown in different visuals, graph, table, chart and statistics. The export function to a report can be customized showing your company logo and title at the top. This makes it possible to generating a professional report.

Features

- Direct communication with the PC
- Compatible to all Messmer Büchel and TMI instruments.
- Other instruments can be connected reading the output string via RS232
- Easy way of generating a report
- Combining different tests in one overview
- 1 license can manage 5 instruments
- One purchase, no annual fee
- Light program that runs on any PC

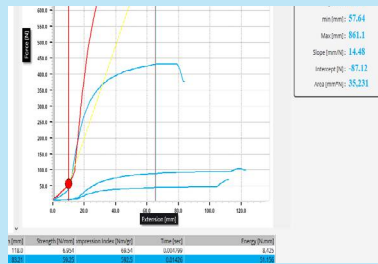


**Taking care
of quality**



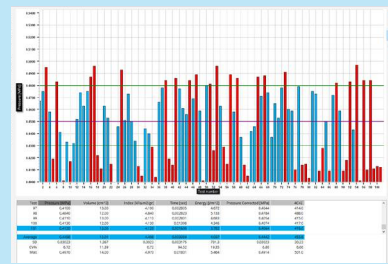
License, 5 instruments

One GraphMaster license is capable of handling 5 instruments. For each test you open a GraphMaster module making it possible to work simultaneously.



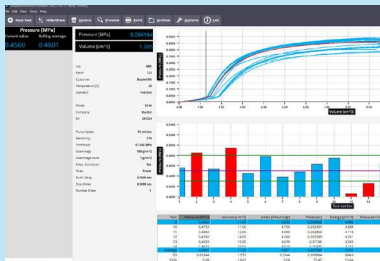
View test curve in real-time

When multiple data points per test are sent, GraphMaster software populates a curve. The curve provides more information on the test.



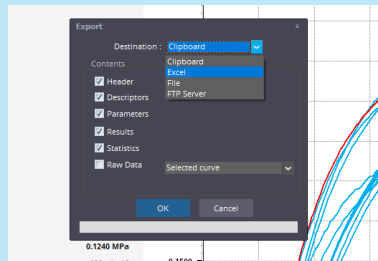
Combine different tests

Analyzing different tests made in the past is easy. You combine them and generate a report with a graph and analyses.



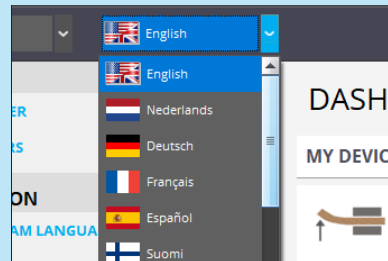
Easy to use

The GraphMaster software gives you all the important settings and values in one screen. Advanced settings are available in a couple of clicks.



Export functions

Multiple export functions are included for example to Excel, PDF report, CSV file to a PC or ftp server, run a script to store data on SQL Server or other database.



Trial version

Not fully convinced? Go to our website and download a trial version. You will have all the functions, but limited number of tests.

www.messmerbuchel.com/graphmaster

Specifications

Computer specifications advised:

- 1 gigahertz (GHz) or faster x86-bit or x64-bit
- 2 GB RAM
- 1.0 GB available disk space
- 1280 x 800 screen resolution.
- USB port for the software dongle
- USB ports or 9-pin RS-232 serial ports in accordance to the instruments connected
- CD-ROM drive (For software update)
- Internet access (for software update)

Operating Systems

- Windows Vista, Windows 7, Windows 8, Windows 8.1 or Windows 10

**MESSMER
BÜCHEL**

Vertrieb in Deutschland durch:

Luhne Messtechnik

Inhaber: Herr Dipl.-Ing.(FH) Stefan Luhne
Kölnerstrasse 167
D-41199 Mönchengladbach

**INDUSTRIAL
PHYSICS**

Telefon: +49 (0)2166 / 68 18 88

Telefon: +49 (0)2166 / 68 18 20

Telefax: +49 (0)2166 / 146 51 70

Email: info@luhne-messtechnik.de

Internet: www.luhne-messtechnik.de