

# Bendtsen Roughness and Porosity

**MODEL  
58-27**



## Allround Roughness and Porosity

The Bendtsen Tester is able to measure both Roughness and Porosity of paper and board. The instrument is easy to use. The 7-inch touchscreen uses intuitive icons.

## Test results

The original test design of Dr. Bendtsen had problems keeping the air pressure at a constant level. The 58-27 Bendtsen tester measures the air pressure in the head. Therefore, a change in pressure is directly recorded and controlled.

## Features

- Measures both Roughness and Porosity
- 7-inch touchscreen
- Internal Calibration Routine
- Electronic measurement for constant air flow
- Flexible roughness head
- Sheffield options available

## International Standards

<u>Roughness</u>	<u>Porosity</u>
• ISO 8791-2	5636-3
• Scan P21	
• Nen 2012	Nen 2015
• BS 4420	BS 1990
• DIN 53108	DIN 53120

**Is your required standard not here? Ask us**

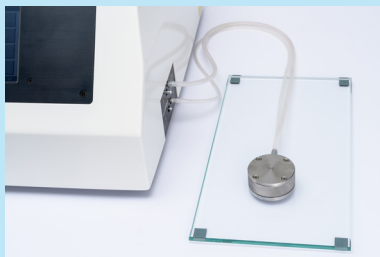


**Taking care  
of quality**



### Touchscreen

The touchscreen uses big icons to guide you through the settings and tests. This makes navigation intuitive and less language dependent.



### Roughness head

The roughness head (10cm<sup>2</sup>) is connected to the instrument with flexible hoses. The flexibility makes it easy to rapidly perform multiple tests.



### Porosity head

The porosity head clamps the sample automatically ensuring a constant pressure. Roughness and Porosity can be measured with one instrument.



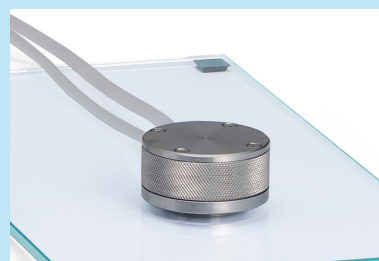
### Constant pressure

A constant air pressure at the measuring head is vital for a reliable result. The Bendtsen has a direct feedback, making it possible to adjust if needed.



### Sheffield option

The Bendtsen tester can also be supplied with a Sheffield option. A special head is connected to the Bendtsen to meet the Sheffield specifications



### Refurbish roughness head

Replacing the measurement ring is very easy. This avoids replacing the complete, expensive, head when it wears over the years.

### Specifications

Model	58-27 Series
Measuring units	roughness ml/min, l/min porosity ml/min, l/min, μm(pas.s)
Measuring range	20 – 5,000 ml/min
Test pressure range	0.7 – 2.5 kPa
Accuracy flow:w	0.5% of reading
Language	Several available including Chinese

### Installation requirements

Electrical	110V /230V /50/60 Hz
Air	400-600 kPa
Dimensions	460 x 430 x 230mm (LxWxH) (18 x 17 x 9 inch)
Weight	16 kg (36 lb.)

### Output

Mini USB

### Optional/ accessories

GraphMaster